

REFERENCE 2012-11

WASTE WATER TREATMENT

DIARY WITH CREAM PRODUCTION

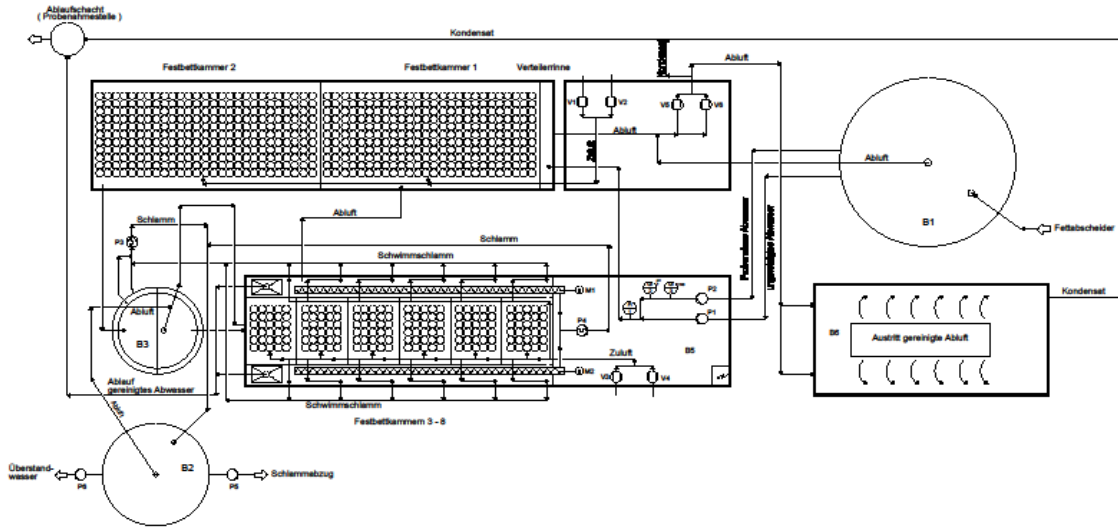


Problem:

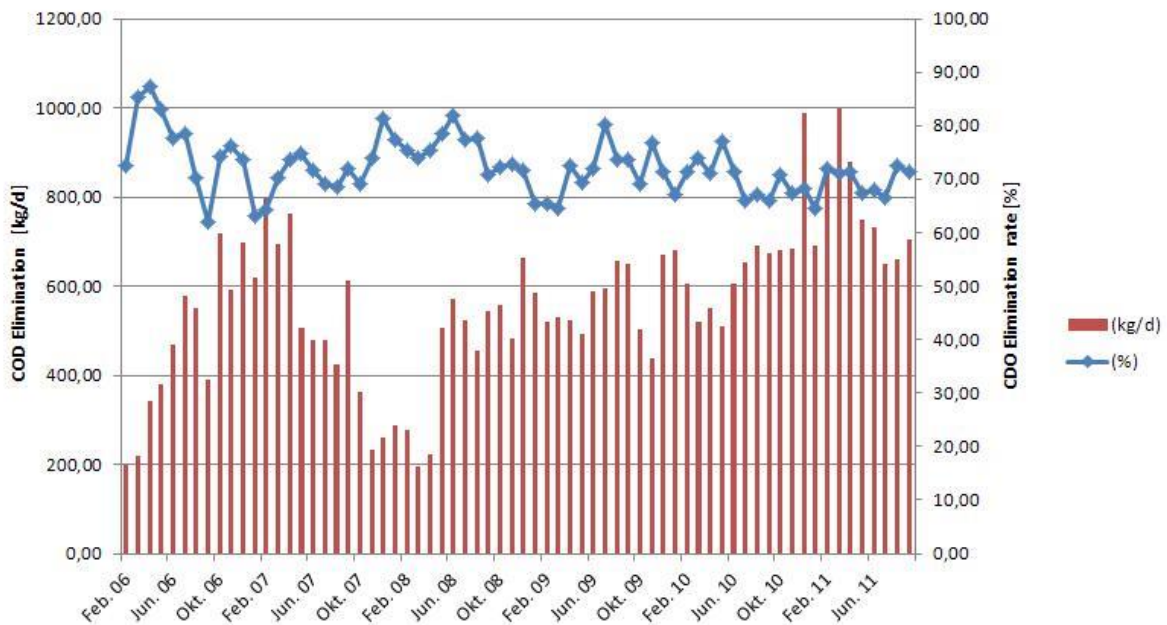
- Wastewater with a high load of fat, overloading of the local municipal sewage treatment plant, bulk sludge formation
- pH-Valuen between 9,9 and 11,5
- Discharge: about 151 m³/day
- COD Concentration: average 3600 mg /l with peaks up to 6300 mg/l

ENVIMAC-Solution:

- ✓ Efficient pre-purification and COD removal.
- ✓ Submerged Fixed Bed Biofilm Reactor SFBBR (first unit 136 m³ carrier, intermediate settling, second unit 24 m³ Festbett) using the former pilotplant inklusive waste air treatment with Biofilter.
- ✓ This system works without PH- controlling.
- ✓ Reliable Elimination of 73% der COD-load even during very high space- and surfaceloading - (up to 5 kg COD/m³*d , up to 41 g COD/m²*d)



COD Elimination in a SFBBR in dairy waster water treatment



ENVIMAC Engineering GmbH
 Im Erlengrund 27
 D-46149 Oberhausen

Tel.: 0 208 941 044 0
 Fax: 0 208 941 044 100
 E-Mail: info@envimac.de
<http://www.envimac.de>