

REFERENZ 2006-11

INTERIM SOLUTION MUNICIPALITY GERMANY IDAR OBERSTEIN



Edge conditions:

Municipal Wastewater
Interim solution during construction phase

Results with ENVIMAC SFBBR-System:

Fixed bed volume	24 m ³
Specific surface	150 m ² /m ³
BOD surface load	8 g BOD ₅ /m ² *d
Pre/post sedimentation	11,94 m ³

Requirements:

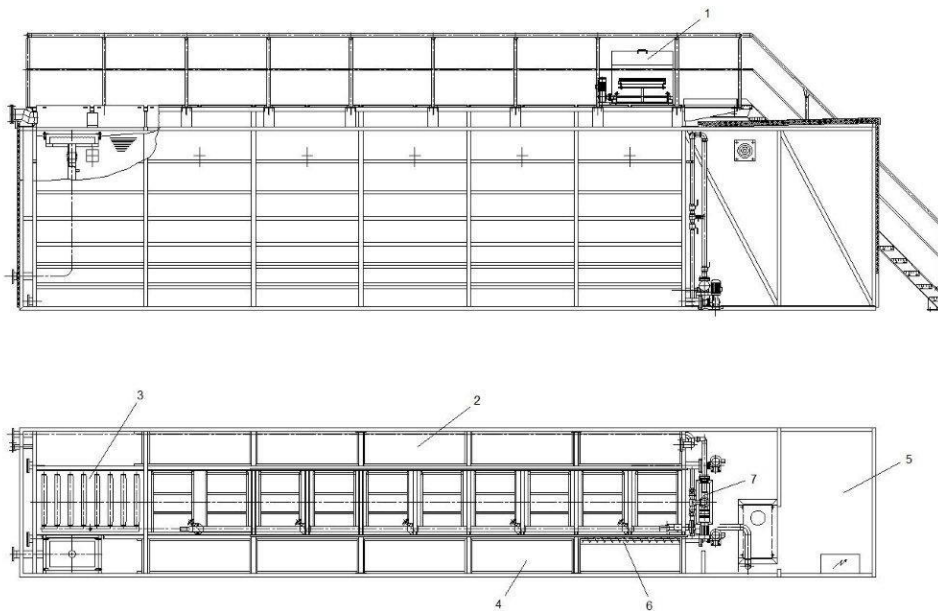
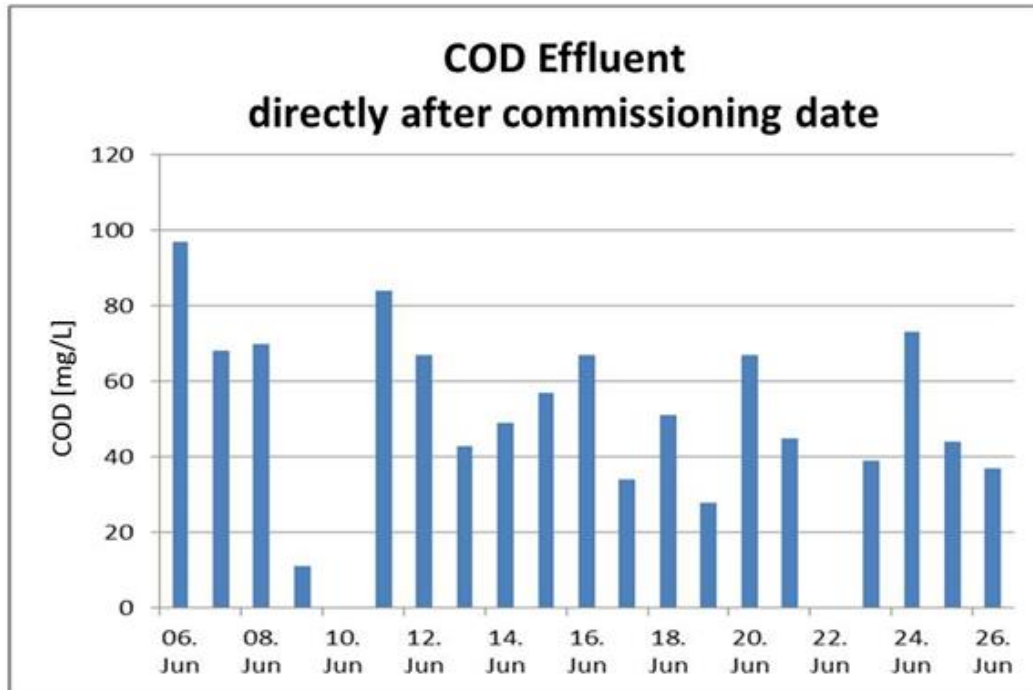
COD	< 100 mg/l
BOD ₅	< 35 mg/l
P _{tot}	< 7 mg/l

Average results:

COD	54 mg/l
BOD ₅	10 mg/l
P _{tot}	2,5 mg/l

ENVIMAC Engineering GmbH
Im Erlengrund 27
D-46149 Oberhausen

Tel.: 0 208 941 044 0
Fax: 0 208 941 044 100
E-Mail:
info@envimac.de
<http://www.envimac.de>



SFBBR Mobile Treatment Unit [1 Screen, 2 Presedimentation, 3 Submerged fixed bed, 4 Postsedimentation, 5 Engineerroom, 6 Covering, 7 Water and sludge pumps]

ENVIMAC Engineering GmbH
Im Erlengrund 27
D-46149 Oberhausen

Tel.: 0 208 941 044 0
Fax: 0 208 941 044 100
E-Mail:
info@envimac.de
<http://www.envimac.de>