

REFERENCE 2012-13

WASET WATER TREATMENT

POULTRY BUTCHERY



The Waste Water:

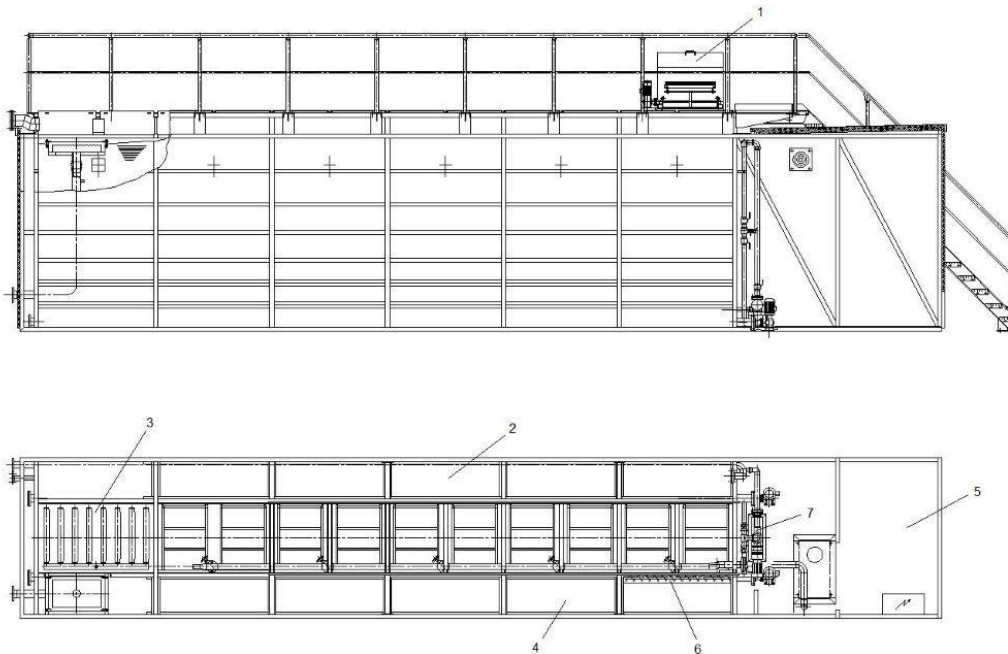
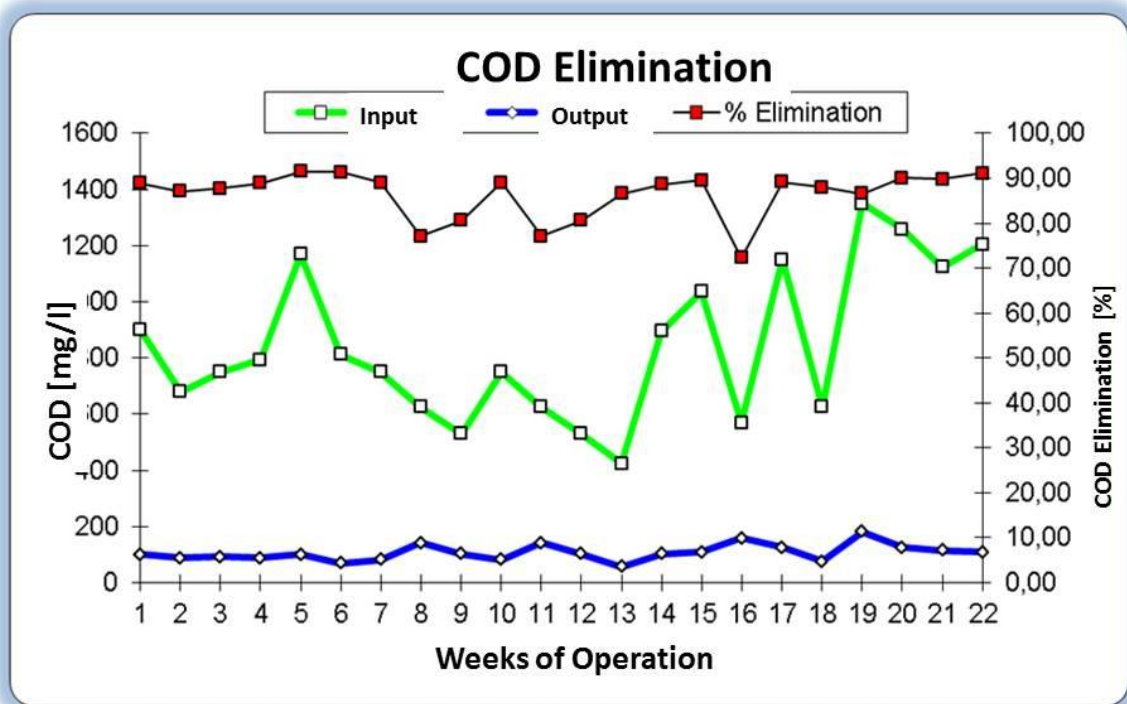
- Pretreatment of waste Water from a poultry butchery .for reduction of COD
- Requirements: CSB \leq 200 mg/l, pH 6,5 - 9,0

ENVIMAC-WWTP:

- ✓ Flotation/Flokkulation
- ✓ Submerged Fixed Bed Reactor without presedimentation
 - Fixed Bed Volume[m³] 6
 - Total Reactor Volumen [m³] 8,5
 - Charge [m³/h] 0,10-0,15
 - Post Sedimentation [m³] 6

Results (Average)

| | |
|------------------------|---|
| COD-Elimination: | 86,6% |
| Nitrification: | 98,7% |
| PH-Wert | 6,8 - 8,5 |
| Phosphate-Elimination: | 38,9% |
| Sludge produktion | 0,005 - 0,009 kg/kg CSB _{elim} . |



Container-Treatment Plant with SFBBR [1 Sieve, 2 Presedimentation, 3 Aerated Fixed Bed, 4 Final sedimentation, 5 Engine room, 6 Capping, 7 Water and sludge pumps]

ENVIMAC Engineering GmbH
 Im Erlengrund 27
 D-46149 Oberhausen

Tel.: 0 208 941 044 0
 Fax: 0 208 941 044 100
 E-Mail: info@envimac.de
<http://www.envimac.de>