



Compact Waster Water Treatment Plant with Biofilm-System

Each unit treats 3.5 m³ waste water per hour.

Domestic sewage up to 500 PE or industrial application up to 200 kg COD / day.

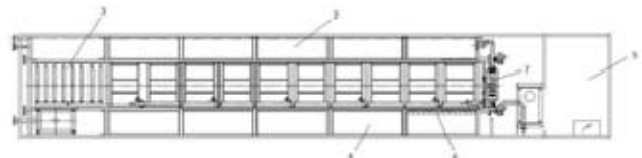
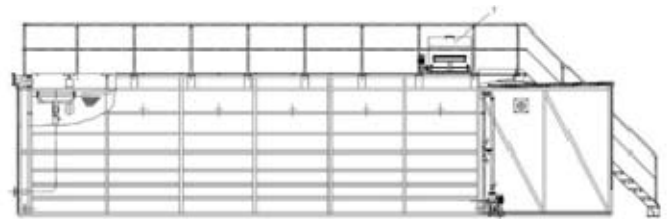
Only one container includes pre-, secondary sedimentation, biofilm reactor and sludge treatment for 500 PE.

Units can be combined in many ways.

Much smaller than SBR or activated sludge systems.

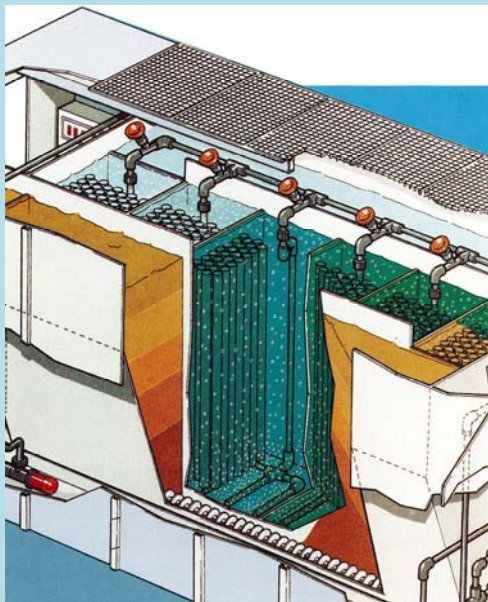
Modular system designed in stainless steel.

Staged system for robust and durable treatment.



Length 12.8 m, Width 2.4 m, Height 2.8 m, Weight 8920 kg

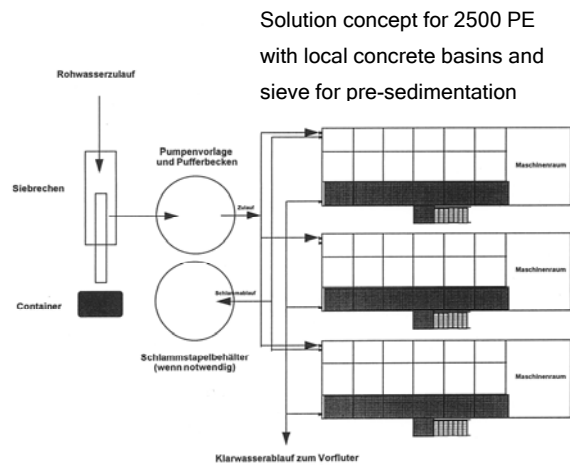
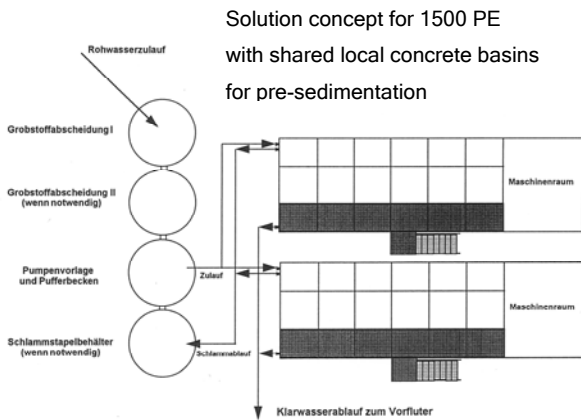
The staged system comes with completely covered pre- and secondary sedimentation tanks, an aerated, submerged biofilm reactor and an optional included sludge treatment. The channel flow can be modified in different ways.



Design of the container plant

- Process stability even with capacity over- or underload conditions.
- No blockage of the fixed bed when operated correctly.
- Fast adaption and adjustment.
- No sludge recycling or sludge management necessary.
- Cost efficient wastewater treatment.
- Turn-key ready container plants.
- Rapid installation.
- Low maintenance and manpower requirements.
- Space saving installation involving local feasibilities.

Assembly-facilities



Domestic wastewater plant for 700 PE

References

Domestic wastewater
Plywood production
Oil regeneration
Gasoline storage
Textile dyeing
Tar production
Cokery
Plastic production
Paper mill
Cosmetic production
Detergent production
Resin production



Domestic wastewater plant for 5000 PE

Bakeries
Diaries
Slaughterhouse
Sausage production
Fish processing
Juice production
Breweries
Digestate
Landfill leachates